

# MONARCH

Materials Group Inc.

## PLASTIC AW-ISOLATOR™

### Preventing Anodic Corrosion

#### Instructions for Mounting Monarch Steel Window Wells onto Concrete Walls using the AW-Isolator™ - Preventing Anodic Corrosion.

For the Monarch Window Well installation (See the “Window Well Mounting” instructions).

#### **End User Notes:** (Read the instructions completely before installing the windows).

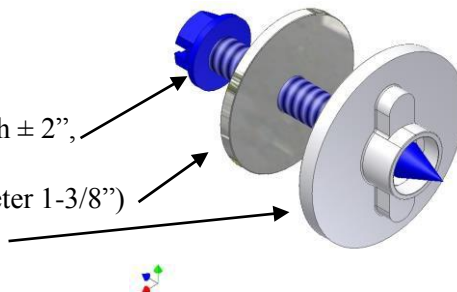
- In some areas of the country, the Monarch Stif Back II and Deluxe Straight series steel window wells require the AW-Isolator™ to be installed. The AW-Isolator™ are special designed to separate the mounting screws from the steel well.

#### **Materials & Tools Needed:**

*Warning: Use protective eyewear.*



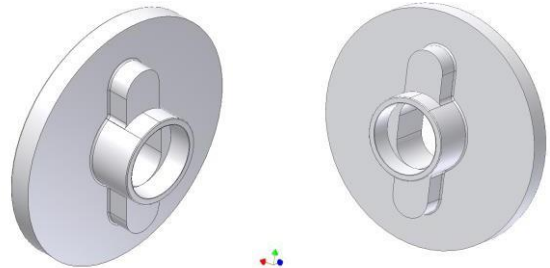
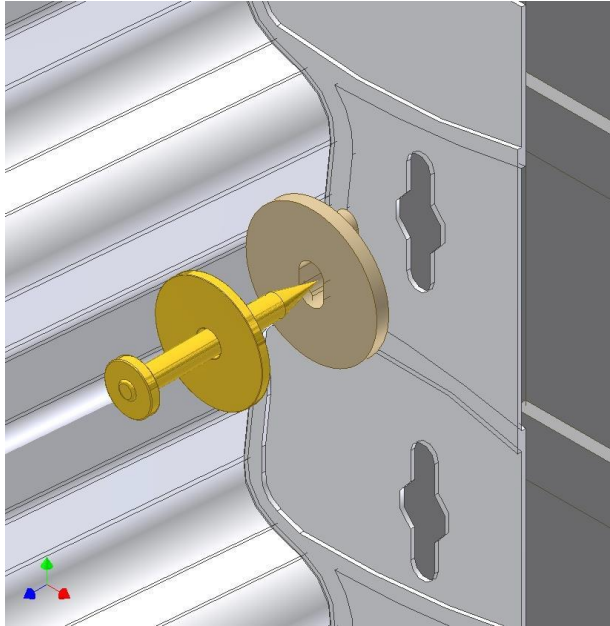
- Hammer drill.
- Masonry drill bit  $\varnothing$  3/16", length 4-1/2".
- Socket or nut driver 5/16".
- Tapcon® concrete screws, diameter  $\varnothing$  1/4" & length  $\pm$  2", recommended anchor head style - hex washer.
- Steel flat washer 1/4" x 1-1/4" (max. outside diameter 1-3/8")
- Plastic AW-Isolator™, Monarch p/n: 10954



#### **Mounting Window Well Installation:**

- The AW-Isolators are designed to fit into the key-hole mounting slots but require a steel fender-washer to transfer the loads from the mounting screws.
  1. Typical installations require four (4) AW-Isolators on each side for a 36" to 48" tall window well, (8) total.
  2. Window wells 60" to 72" may require an additional 2 to 4 AW-Isolators, (12) total.
  3. Drill the holes a 1/4" deeper in the wall then the length of the screw used.
  4. Clean out the holes of all debris.
  5. Insert pointed end of the screw trough washer, AW-Isolator™ and window well into the hole of the base material.
  6. Drive Tapcon® screw slowly, allowing the treads to tap the base material.

- When tighten the mounting screws, the inside flange of the AW-Isolator is designed to collapse and create the separation between the steel window well and the steel mounting screw.
- Do not over-tighten the mounting screws this may result in a loose connections.



**Plastic AW-Isolator™**  
**Part number # 10954**